



Engineered for Safety & Unparalleled Braking Performance!

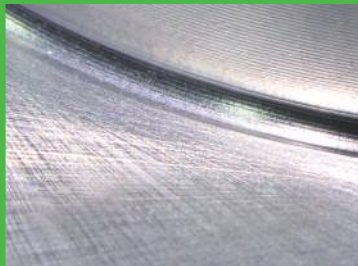
To ensure quality, Nakamoto brake discs are manufactured using **Advance sand casting technology & Fully automated equipment**. Each step of the manufacturing process is subject to strict quality control and original equipment standards.



Safety, Power, Durability

Nakamoto Rotors are manufactured with a state-of-the-art automated casting process using only OE grade G3000 casting alloy for equal strength and structural integrity. With original fitment and form, it's the perfect brake job made easy!

100% CNC Machined



Superior balance, reduces vibration & abnormal wear

Non-Directional Surface Finish



Smoother, quieter, & more effective braking power

Symmetric Vane Casting



Proper thermal efficiency & weight distribution

Minimum Rotor Thickness



Additional safety for DIY & professional installers



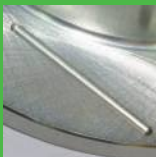
POWER SERIES

Nakamoto Performance Power Series brake rotors are zinc coated, crossdrilled and slotted to give your vehicle the extra brake performance that it needs!

- Improved ventilation and cooling.
- Reduced weight.
- Original fit and form. The perfect brake job made easy!

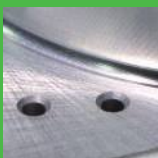
Rounded Slots

Precision machined to remove brake dust and gas during hard braking.



Chamfered Drill Holes

CNC cross drilled to help reduce heat spots and cracking at the hole.



"True" Non-Interference Vane Design

Specific drill pattern for each application. Retains each cooling vane's structure integrity.



Silver Zinc Coated

Reduces rust and corrosion for a longer lasting and a better looking rotor.



PERFORMANCE



Performance Brake Rotor Rotation



Driver Side



Passenger Side

Power Series Performance Brake Rotors are designed **with slots that “cross the vanes”** (i.e. slots that sweep toward the front of the vehicle).

Driver side shown



Straight Vane



Directional Vane

- **Straight Vane Pattern** : It can be installed with the slots in a reverse position without sacrificing performance.
- **Directional Vane Pattern** : By design, this curved vane acts as a pump, **drawing air through the rotor to cool it more efficiently**. It needs to be installed with the vanes sweeping back toward the rear of the vehicle (unless specified otherwise by the vehicle's manufacturer).



Introducing the latest, most advanced coating Technology!

NAKAMOTO's exclusive "**GT SHIELD**" coating is a special formula containing zinc, aluminum, and metal oxides all designed to fight corrosion damage. "**GT SHIELD**" coating is robotic sprayed over the entire rotor to ensure complete coverage. The rotor is then baked at 550+ °C to form a strong, and durable protective layer.

Whether you prefer our Power Series drilled/slotted rotors or basic line rotors, you can expect our new "**GT SHIELD**" coated rotors to outperform any conventional zinc /paint rotors in the market.

